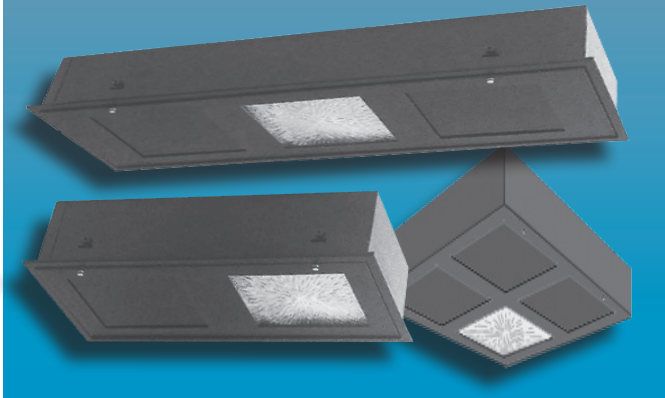


548 DARKROOM SAFELIGHTS

Incandescent Safelights

GENERAL



Specifier's Reference	
Project Name	Type
Catalog No.	
Comments	

- **Listings/Certifications:** Wet location, ETL (US/Canada) listing

Specifications

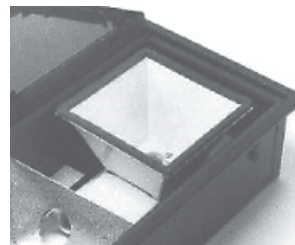
- **Housing:** 20 gauge die-formed and welded steel. Optional stainless steel housing available.
- **Door:** Fully gasketed one piece 20 gauge steel door with continuous piano hinge. Available in brushed 20 gauge stainless steel as option.
- **Lens:** Standard Pattern 73 tempered glass lens for general illumination.
- **Filter:** Eastman Kodak darkroom safelight filter(s). See below for quantities included. Filter choice by others.
- **Fasteners:** Knurled nickel plated brass thumb screws for easy access.
- **Lamps:** General illumination - up to 200 watt A-21 lamp by others. Filter compartment - maximum 15 watt A-15 lamp by others. This is the highest wattage recommended by Eastman Kodak. Higher wattage may damage filter.
- **Finish:** Standard matte black polyester powder coat paint finish.

Ordering Information

Example: F - 548 - 2DR - GBX-2 - TP

Mounting	Series	Size	Filter(s)	Options
<input type="text"/>	- <input type="text" value="548"/>	- <input type="text"/>	- <input type="text"/>	- <input type="text"/>
<p>-G For T-Grid Ceiling</p> <p>-F For Plaster or Drywall ceiling</p> <p>-S Surface Mounted</p>		<p>-1DR One Compartment (Includes one filter)</p> <p>-2DR Two Compartments (Includes one filter and one lens for general illumination)</p> <p>-3DR Three Compartments (Includes two filters and one lens for general illumination)</p> <p>-4DR Four Compartments (Includes three filters and one lens for general illumination)</p>	<p>-OA Greenish Yellow</p> <p>-OC Light Amber</p> <p>-1 Red</p> <p>-1A Light Red</p> <p>-2 Dark Red</p> <p>-3 Dark Green</p> <p>-7B Green</p> <p>-8 Discontinued - Kodak recommends the #13 Amber instead</p> <p>-10 Dark Amber</p> <p>-13 Amber</p> <p>-GBX-2 Dark Red</p>	<p>-SS 20 Gauge Stainless Steel Housing, Brushed Stainless Steel Door</p> <p>-SD 20 Gauge Brushed Stainless Steel Door</p> <p>-TP Tamper Proof Screws and Tool</p> <p>-JB Prewired Junction Box Mounted to Top of Housing</p> <p>-PF Plaster Frame</p>
<p>NOTE: KODAK RECOMMENDED MAXIMUM LAMP WATTAGE: 15WATTS. HIGHER WATTAGE MAY MELT FILTER.</p>				

Complete selection of Kodak safelight filters



Sealed reflector to insure no stray light can escape and expose film.

Morlite
TOUGH SITES TOUGH LITES

1805 Pittsburgh Ave, Erie, PA 16502 • 800-865-5954 • Fax 800-667-9959



548 DARKROOM SAFELIGHTS

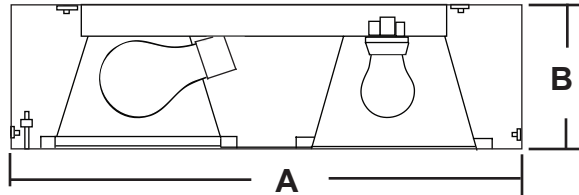
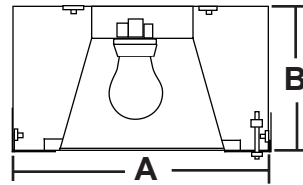
Incandescent Safelights

Morlite
TOUGH SITES TOUGH LITES

Dimensions & Mounting

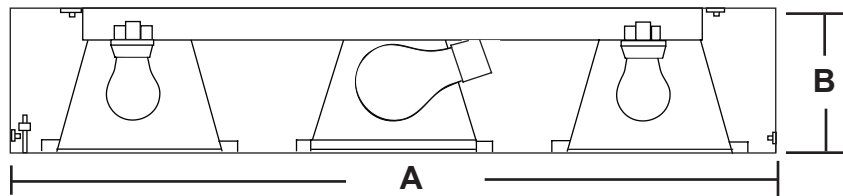
1	GANG		
	SURFACE	GRID	FLANGE
A	10-11/16"	11-13/16"	10-3/8"
B	6"	6"	6"
OA	10-5/8"x10-7/16"x6"	11-13/16"x11-13/16"x6"	10-3/4"x10-3/4"x6"

CEILING OPENING



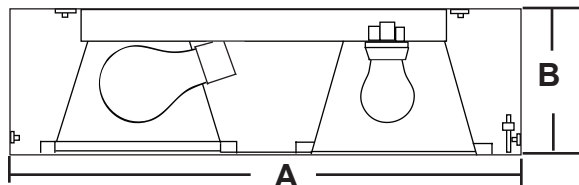
2	GANG		
	SURFACE	GRID	FLANGE
A	22-11/16"	23-13/16"	22-3/4"
B	6"	6"	6"
OA	22-5/8"x10-7/16"x6"	23-13/16"x11-13/16"x6"	22-3/4"x10-3/4"x6"

CEILING OPENING



3	GANG		
	SURFACE	GRID	FLANGE
A	34-11/16"	35-13/16"	34-3/4"
B	6"	6"	6"
OA	34-5/8"x10-7/16"x6"	35-13/16"x11-13/16"x6"	34-3/4"x10-3/4"x6"

CEILING OPENING



4	GANG		
	SURFACE	GRID	FLANGE
A	22-7/16"	23-13/16"	23-1/8"
B	6"	6"	6"
OA	22-7/16"x22-5/8"x6"	23-13/16"x22-3/8"x6"	22-3/4"x22-3/4"x6"

CEILING OPENING