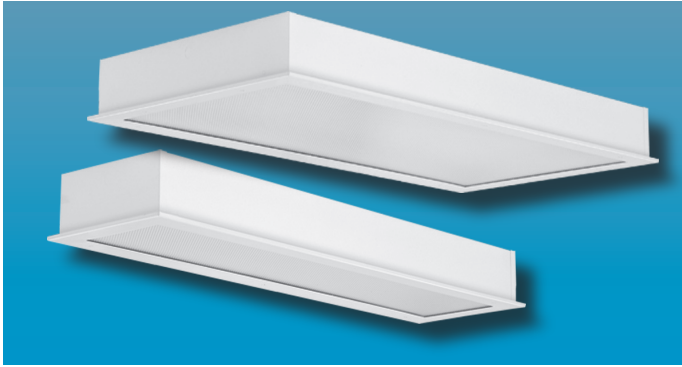


# CRF SERIES

RECESSED FLANGE CLEAN ROOM

# CLEAN ROOM

Suitable for 100, 1,000, 10,000 environments



## Specifier's Reference

Project Name	Type
Catalog No.	
Comments	

- **Listings/Certifications:** ETL (US/Canada). NSF, Wet location listed

## Specifications

- **Housing:** 20-gauge cold rolled steel "hole-free" housing with lapped and welded seams. Flattened 1/2" knockouts in top and ends of housing. Optional 18-gauge stainless steel or 16-gauge aluminum housing available.
- **Door:** 18-gauge cold rolled steel door frame with concealed pins hinges. Optional 18-gauge brushed stainless steel or 16 gauge aluminum door available.
- **Lens:** Standard .125" thick clear prismatic acrylic with smooth side exposed to facilitate cleaning. Held with continuous formed channels for positive retention. Optional lensing shown below.
- **Gasket:** Closed cell neoprene sponge gasket between door and housing. Perimeter of endplates sealed with silicone caulking.
- **Door Latch Screws:** Standard captive slotted flush head screws to secure door.
- **Lamps:** See below for lamping options. Lamps supplied by others.
- **Ballasts:** Standard universal voltage 120V through 277V electronic 90% power factor <10% THD. Other ballast options available.
- **Finish:** Standard baked white polyester powder coat paint finish. Optional AgION™ antimicrobial finish available.
- **Mounting:** Cross mounting channels supplied. Support above plenum by others. Optional plaster frame available.

## Ordering Information

Example: **CRF - 24 - 6 - T8 - EB - A - SS - PF - UNV**

Series	Size	No. Lamps	Lamp Type	Ballast Type	Lens Type	Options	Voltage
<b>CRF</b>	-	-	-	-	-	-	-
	<b>-24</b> 2 X 4 Unit	<b>-6</b> Six Lamps (2X4 only)	<b>-T8</b> 32W (2X4) 17W (2X2)	<b>-EB10IS</b> Electronic Ballast <10% THD Instant Start	<b>-A</b> .125 Prismatic Acrylic (standard)	<b>-EMG1</b> 1-Lamp Emergency Power Pak	<b>-UNV</b>
	<b>-14</b> 1 X 4 Unit	<b>-4</b> Four Lamps	<b>-T5</b> 32W (1X4)	<b>-SB</b> Specified Ballast	<b>-E</b> .125 Prismatic Polycarbonate	<b>-EMG2</b> 2-Lamp Emergency Power Pak	<b>-347V</b>
		<b>-2</b> Two Lamps	<b>-T5HO</b> 28W (2X4) 14W (2X2) 28W (1X4)		<b>-F</b> .187 Prismatic Polycarbonate	<b>-SS</b> 18ga Stainless Steel Housing with 18ga Brushed Flange, Brushed Stainless Steel Door	
						<b>-AL</b> 16ga Painted Aluminum Housing, 16ga Painted Aluminum Door	
						<b>-AG</b> AgION™ Antimicrobial Protection in Powder Coat Paint	
						<b>-PF</b> Plaster Frame	
						<b>-GMF</b> Slo Blo Fusing	

Note: Contact Factory For Additional Configurations.

**Morlite**  
TOUGH SITES ..... TOUGH LITES

1805 Pittsburgh Ave, Erie, PA 16502 • 800-865-5954 • Fax 800-667-9959



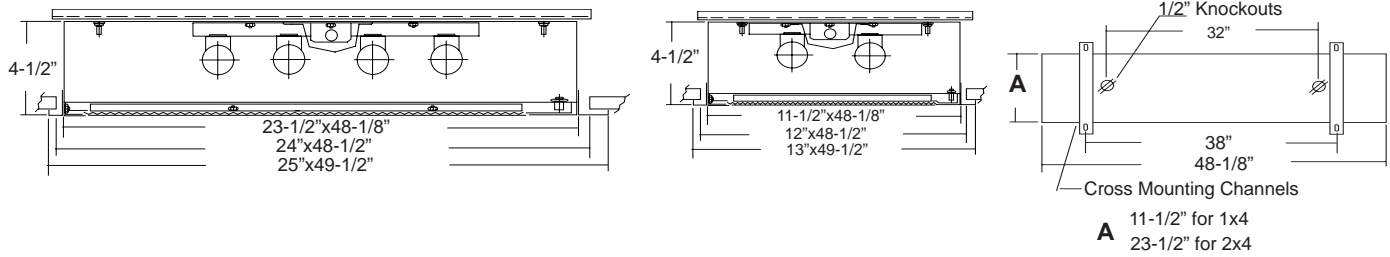
# CRF SERIES

RECESSED FLANGE CLEAN ROOM

# Morlite

TOUGH SITES .... TOUGH LITES

## Dimensions & Mounting

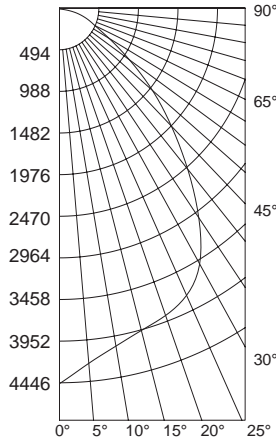


## Photometry

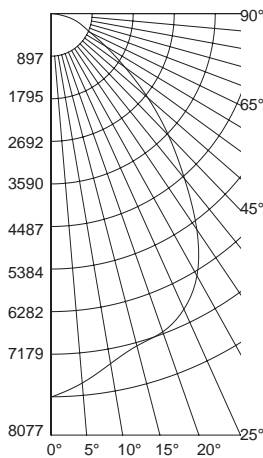
**Catalog #CRF-24-4-T8**  
**Luminaire Efficiency: 76.7%**  
**Lamps: 4 - FO32/T8/735**  
**Input Wattage: 128 Watts**  
**Ballast Type: Electronic**  
**Ballast Factor: 1.0**

Floor	20%										
Ceilings	80%			70%			50%				
Walls(%)	70	50	30	10	70	50	30	10	50	30	10
0	91	91	91	91	89	89	89	89	85	85	85
1	85	82	79	77	83	80	78	75	77	75	73
2	79	73	69	65	77	72	68	64	69	66	63
3	73	66	60	56	71	64	59	55	62	58	54
4	67	59	53	49	65	58	52	48	56	51	48
5	62	53	47	43	61	53	47	43	51	46	42
6	58	49	42	38	56	48	42	38	47	41	37
7	54	44	38	34	53	44	38	34	43	37	34
8	50	41	35	31	49	40	35	31	39	34	30
9	47	38	32	28	46	37	32	28	36	31	28
10	44	35	29	25	43	34	29	25	34	29	25

### Candlepower Distribution



### Candlepower Distribution



**Catalog #CRF-24-4-T5HO**  
**Luminaire Efficiency: 78.9%**  
**Lamps: 4 - FO54/T5/735**  
**Input Wattage: 216 Watts**  
**Ballast Type: Electronic**  
**Ballast Factor: 1.0**

Floor	20%										
Ceilings	80%			70%			50%				
Walls(%)	70	50	30	10	70	50	30	10	50	30	10
0	94	94	94	94	92	92	92	92	87	87	87
1	87	84	81	79	85	82	80	77	79	77	75
2	81	75	71	67	79	74	69	66	71	67	64
3	74	67	62	57	73	66	61	57	64	60	56
4	69	61	55	50	67	60	54	50	58	53	49
5	64	55	49	44	62	54	48	44	53	47	43
6	60	50	44	39	58	49	43	39	48	43	39
7	55	46	40	35	54	45	39	35	44	39	35
8	52	42	36	32	51	42	36	32	41	35	31
9	49	39	33	29	48	38	33	29	38	32	29
10	46	36	30	26	45	36	30	26	35	30	26

## Options

**Antimicrobial:** Optional Agion™ Antimicrobial protection using silver technology inhibits bacterial colonization on metal interior and exterior surfaces. Agion™ antimicrobial FDA recognized and EPA registered, meeting all applicable EPA standards.

Closed Cell Neoprene Gasket Standard



.125 Prismatic Acrylic Lens Standard

# Morlite

a Genlyte company