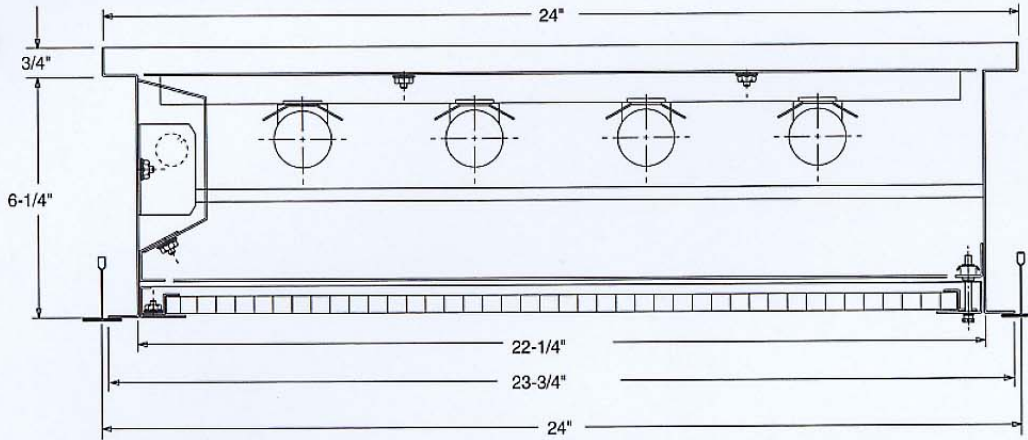
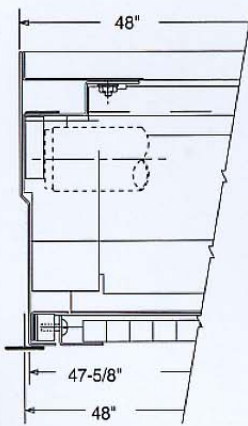


## CRGHEPA24 SERIES



"CROSS SECTION"



"END SECTION"

### Specifications and Features

- 20-gauge, die formed cold rolled steel "hole-free" housing with lapped and sealed seams.
- Integral formed frame above fixture to accommodate 48" or 42" "HEPA" air filters.
- One-piece, 18-gauge, cold rolled steel door frame with concealed pin hinges.
- Captive knurled head thumb screws to secure door.
- H.P.F. energy saving rapid start ballast, class "P", ETL/CBM. Installed in fully enclosed wireway channel.
- Full length formed individual lamp reflectors.
- White 1/2" cube molded acrylic louver secured in door with continuous formed retaining angles.
- Perimeter of end plates sealed with silicone caulking.
- Closed cell neoprene sponge door and lens gasket.
- Baked white polyester powder coat paint finish.
- U.L. listed.
- All specifications subject to change without notice.

### Ordering Information

Example: CRG - HEPA - 24 - 432 - 48 - EB - 120V

CRG-HEPA-24

**Lamps** ◇

- 240 = Two F40W
- 340 = Three F40W
- 440 = Four F40W

◇ For Octron (T-8)  
Lamps change designation to the proper wattage.  
Ex.: 240 to 232, 220 to 217.

**Filter**

- 42 = 42" Filter
- 48 = 48" Filter
- Filters Supplied by Others

**Options**

- SD = C.R. Steel Housing, Brushed Stainless Steel Door Frame
- SS = Stainless Housing with Brushed Flange, Brushed Stainless Steel Door
- AD = C.R. Steel Housing, Painted Aluminum Door Frame
- AL = Painted Aluminum Housing, Painted Aluminum Door Frame
- EB = Electronic Ballast
- SG = Closed Cell Silicone Sponge Gasketing
- FG = Field Installed Flange Gasket
- EMG = Emergency Lighting Battery Pack
- GLR = HLR/GLR Fusing
- RIF = Filtered for Suppression of Radio Interference

**Voltage**

- 120 = 120 Volts
- 277 = 277 Volts
- 347 = 347 Volts

Fixture Type:	Voltage:
Catalog No.:	
Job Name:	
Approved by:	