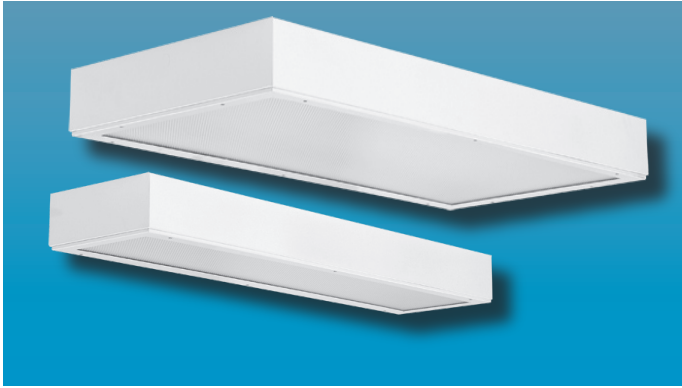


CRS-DD SERIES

SURFACE MOUNTED CLEAN ROOM WITH DROP DOWN DOOR

CLEAN ROOM

Suitable for 100, 1,000, 10,000 environments



Specifier's Reference

Project Name	Type
Catalog No.	
Comments	

- **Listings/Certifications:** ETL (US/Canada). NRF, Wet location listing

Specifications

- **Housing:** 20-gauge cold rolled steel "hole-free" housing with lapped and welded seams. Flattened 1/2" knockouts in top and ends of housing. Optional 18-gauge stainless steel or 16-gauge aluminum housing available.
- **Door:** Drop down 18-gauge cold rolled steel door frame. Optional 18-gauge brushed stainless steel or 16 gauge aluminum door available.
- **Lens:** Standard .125" thick clear prismatic acrylic with smooth side exposed to facilitate cleaning. Held with continuous formed channels for positive retention. Optional lensing shown below.
- **Gasket:** Closed cell neoprene sponge gasket between door and housing. Perimeter of endplates sealed with silicone caulking.
- **Door Latch Screws:** Standard Phillips head screws to secure door.
- **Lamps:** See below for lamping options. Lamps supplied by others.
- **Ballasts:** Standard universal voltage 120V through 277V electronic 90% power factor <10% THD. Other ballast options available.
- **Finish:** Standard baked white polyester powder coat paint finish. Optional AgION™ antimicrobial finish available.
- **Mounting:** (4) 5/16" Diameter mounting holes provided, with 1/2" knockouts for wiring. All hardware by others.

Ordering Information

Example: **CRS - DD - 24 - 6 - T8 - EB - A - SS - UNV**

Series	Size	No. Lamps	Lamp Type	Ballast Type	Lens Type	Options	Voltage
CRS-DD	<input type="text"/>	<input type="text"/>	<input type="text"/>	<input type="text"/>	<input type="text"/>	<input type="text"/>	<input type="text"/>
	-24 2 X 4 Unit	-6 Six Lamps (2X4 only)	-T8 32W (2X4) 17W (2X2) 32W (1X4)	-EB10IS Electronic Ballast <10% THD Instant Start	-A .125 Prismatic Acrylic (standard)	-EMG1 1-Lamp Emergency Power Pak	-UNV
	-14 1 X 4 Unit	-4 Four Lamps (2X4 only)	-T5 28W (2X4) 14W (2X2) 28W (1X4)	-SB Specified Ballast	-E .125 Prismatic Polycarbonate	-EMG2 2-Lamp Emergency Power Pak	-347V
		-3 Three Lamps	-T5HO 54W (2X4) 24W (2X2) 54W (1X4)		-F .187 Prismatic Polycarbonate	-SS 18ga Stainless Steel Housing with 18ga Brushed Flange, Brushed Stainless Steel Door	
						-AL 16ga Painted Aluminum Housing, 16ga Painted Aluminum Door	
						-AG AgION™ Antimicrobial Protection in Powder Coat Paint	
						-GMF Slo Blo Fusing	

Note: Contact Factory For Additional Configurations.

Morlite
TOUGH SITES TOUGH LITES

1805 Pittsburgh Ave, Erie, PA 16502 • 800-865-5954 • Fax 800-667-9959

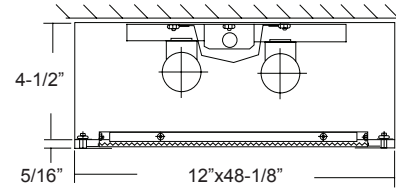
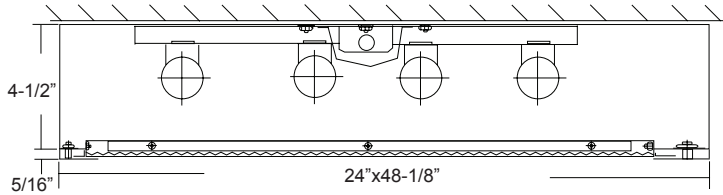


CRS-DD SERIES

SURFACE MOUNTED CLEAN ROOM WITH DROP DOWN DOOR



Dimensions & Mounting

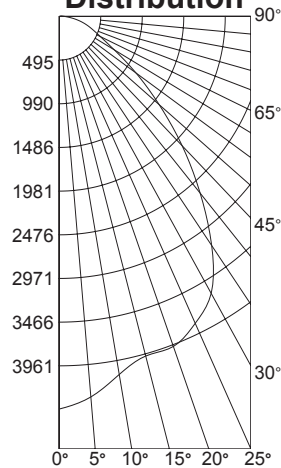


Photometry

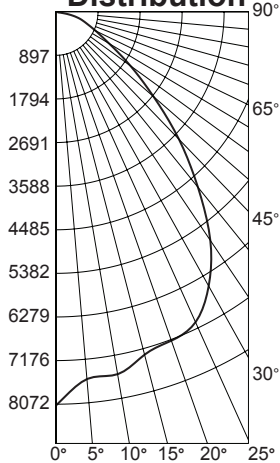
Catalog #CRS-24-4-T8
Luminaire Efficiency: 75.5%
Lamps: 4 - FO32/T8/735
Input Wattage: 128 Watts
Ballast Type: Electronic
Ballast Factor: 1.0

Floor	20%											
	80%			70%			50%					
Ceilings	70	50	30	10	70	50	30	10	50	30	10	
Walls(%)	0	90	90	90	90	88	88	88	88	84	84	84
1	83	80	78	75	81	79	76	74	75	74	72	
2	77	72	68	64	75	71	67	63	68	65	62	
3	71	64	59	55	70	63	58	54	61	57	54	
4	66	58	52	48	64	57	52	48	55	51	47	
5	61	53	47	42	60	52	46	42	50	45	41	
6	57	48	42	37	56	47	41	37	46	41	37	
7	53	44	38	34	52	43	38	33	42	37	33	
8	49	40	34	30	49	40	34	30	39	34	30	
9	47	37	31	28	46	37	31	27	36	31	27	
10	44	34	29	25	43	34	29	25	33	28	25	

Candlepower Distribution



Candlepower Distribution



Catalog #CRS-24-4-T5HO
Luminaire Efficiency: 77.7%
Lamps: 4 - FO54/T5HO/735
Input Wattage: 216 Watts
Ballast Type: Electronic
Ballast Factor: 1.0

Floor	20%											
	80%			70%			50%					
Ceilings	70	50	30	10	70	50	30	10	50	30	10	
Walls(%)	0	92	92	92	90	90	90	90	86	86	86	
1	86	83	80	78	84	81	79	76	78	76	74	
2	79	74	69	66	77	73	68	65	70	66	63	
3	73	66	61	57	72	65	60	56	63	59	55	
4	68	60	54	49	66	59	53	49	57	52	48	
5	63	54	48	43	62	53	48	43	52	47	43	
6	59	49	43	39	57	49	43	39	47	42	38	
7	55	45	39	35	53	45	39	35	43	38	34	
8	51	42	35	31	50	41	35	31	40	35	31	
9	48	38	32	28	47	38	32	28	37	32	28	
10	45	36	30	26	44	35	30	26	34	29	26	

Options

Antimicrobial: Optional Agion™ Antimicrobial protection using silver technology inhibits bacterial colonization on metal interior and exterior surfaces. Agion™ antimicrobial FDA recognized and EPA registered, meeting all applicable EPA standards.

Closed Cell Neoprene Gasket Standard



.125 Prismatic Acrylic Lens Standard