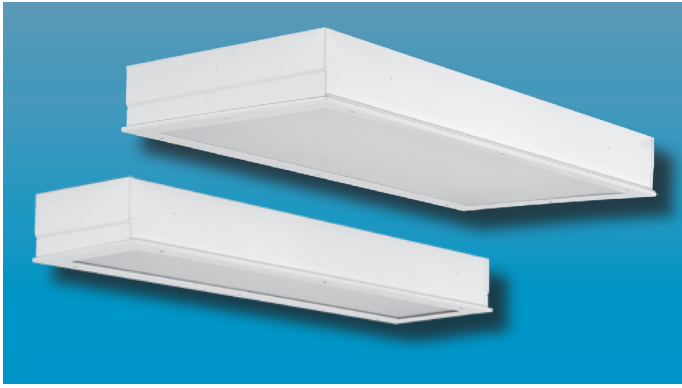


FPG-DD SERIES

GRID MOUNTED FOOD PROCESSING WITH DROP DOWN DOOR

FOOD PROCESSING



Specifier's Reference	
Project Name	Type
Catalog No.	
Comments	

- **Listings/Certifications:** ETL (US/Canada).
NSF, Wet location listed

Specifications

- **Housing:** 20-gauge cold rolled steel "hole-free" housing with lapped and welded seams. Flattened 1/2" knockouts in top and ends of housing. Optional 18-gauge stainless steel or 16-gauge aluminum housing available.
- **Door:** Drop down 18-gauge cold rolled steel door frame. Optional 18-gauge brushed stainless steel or 16 gauge aluminum door available.
- **Lens:** Standard .125" thick clear prismatic acrylic with smooth side exposed to facilitate cleaning. Held with continuous formed channels for positive retention. Optional lensing shown below.
- **Gasket:** Closed cell neoprene sponge gasket between door and housing. Perimeter of endplates sealed with silicone caulking.
- **Door Latch Screws:** Standard captive slotted flush head screws to secure door.
- **Lamps:** See below for lamping options. Lamps supplied by others.
- **Ballasts:** Standard universal voltage 120V through 277V electronic 90% power factor <10% THD. Other ballast options available.
- **Finish:** Standard baked white polyester powder coat paint finish. Optional AgION™ antimicrobial finish available.
- **Mounting:** Housing to fit 1" or 1-1/2" grid ceilings. Support above plenum by others.

Ordering Information

Example: **FPG - DD - 24 - 6 - T8 - EB - A - SS - UNV**

Series	Size	No.Lamp Lamps	Ballast Type	Lens Type	Type	Options	Voltage
FPG-DD	<input type="text"/>	<input type="text"/>	<input type="text"/>	<input type="text"/>	<input type="text"/>	<input type="text"/>	<input type="text"/>
	-24 2 X 4 Unit	-6 Six Lamps (2X4 only)	-T8 32W (2X4) 17W (2X2)	-EB10IS Electronic Ballast <10% THD Instant Start	-A .125 Prismatic Acrylic (standard)	-EMG1 1-Lamp Emergency Power Pak	-UNV
	-14 1 X 4 Unit	-4 Four Lamps (2X4 only)	-T5 28W (2X4) 14W (2X2)	-SB Specified Ballast	-E .125 Prismatic Polycarbonate	-EMG2 2-Lamp Emergency Power Pak	-347V
		-3 Three Lamps	-T5HO 28W (1X4) 54W (2X4) 24W (2X2) 54W (1X4)		-F .187 Prismatic Polycarbonate	-SS 18ga Stainless Steel Housing with 18ga Brushed Flange, Brushed Stainless Steel Door	
						-AL 16ga Painted Aluminum Housing, 16ga Painted Aluminum Door	
						-AG AgION™ Antimicrobial Protection in Powder Coat Paint	
						-GMF Slo Blo Fusing	

Note: Contact Factory For Additional Configurations.

Morlite
TOUGH SITES TOUGH LITES

1805 Pittsburgh Ave, Erie, PA 16502 • 800-865-5954 • Fax 800-667-9959



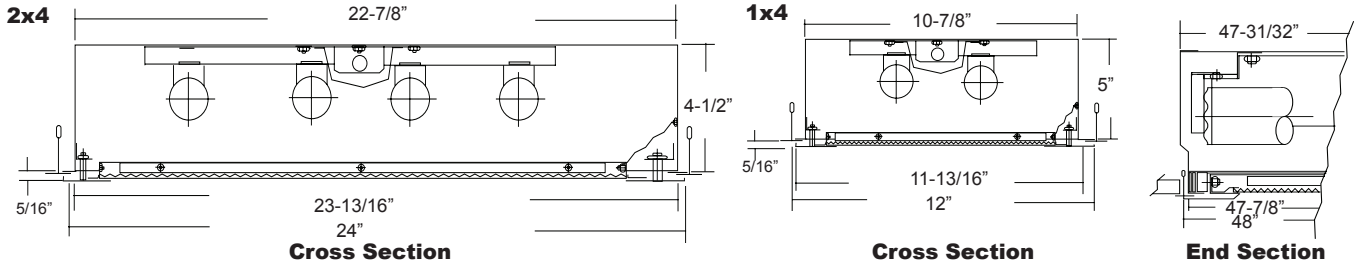
FPG-DD SERIES

GRID MOUNTED FOOD PROCESSING WITH DROP DOWN DOOR

Morlite

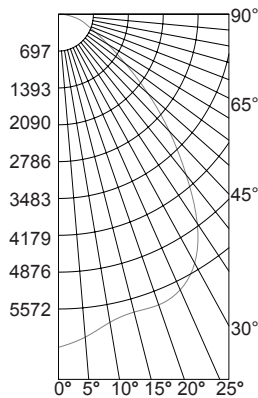
TOUGH SITES TOUGH LITES

Dimensions & Mounting



Photometry

Candlepower Distribution



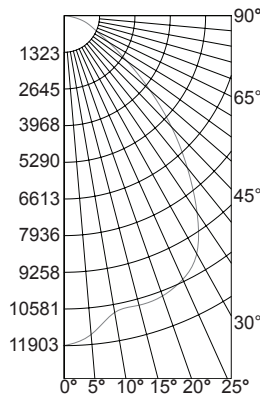
Catalog #FPG-DD-24-6-T8
 Luminaire Efficiency: 74.8%
 Lamps: 6 - FO32/T8/735
 Input Wattage: 192 Watts
 Ballast Type: Electronic
 Ballast Factor: 1.0

Floor	20%											
Ceilings	80%				70%				50%			
Walls(%)	70	50	30	10	70	50	30	10	50	30	10	70
0	89	89	89	89	87	87	87	87	83	83	83	83
1	83	80	77	75	81	78	75	73	75	73	71	71
2	76	71	67	63	74	70	66	62	67	64	61	61
3	70	64	58	54	69	62	58	54	60	56	53	53
4	65	57	52	47	64	56	51	47	55	50	46	46
5	60	52	46	41	59	51	45	41	50	45	41	41
6	56	47	41	37	55	46	41	37	45	40	36	36
7	52	43	37	33	51	43	37	33	41	36	33	33
8	49	40	34	30	48	39	34	30	38	33	29	29
9	46	37	31	27	45	36	31	27	35	30	27	27
10	43	34	28	25	42	33	28	25	33	28	24	24

Catalog #FPG-DD-24-6-T5HO
 Luminaire Efficiency: 78.5%
 Lamps: 6 - FO54/T5/735
 Input Wattage: 324 Watts
 Ballast Type: Electronic
 Ballast Factor: 1.0

Floor	20%											
Ceilings	80%				70%				50%			
Walls(%)	70	50	30	10	70	50	30	10	50	30	10	70
0	93	93	93	93	91	91	91	91	87	87	87	87
1	87	84	81	78	85	82	79	77	78	76	75	75
2	80	75	70	66	78	73	69	65	70	67	64	64
3	74	67	61	57	72	66	61	56	63	59	55	55
4	68	60	54	50	67	59	54	49	57	52	49	49
5	63	54	48	44	62	54	48	43	52	47	43	43
6	59	50	43	39	58	49	43	39	48	42	38	38
7	55	45	39	35	54	45	39	35	44	38	34	34
8	51	42	36	31	50	41	35	31	40	35	31	31
9	48	38	32	28	47	38	32	28	37	32	28	28
10	45	36	30	26	44	35	30	26	34	29	26	26

Candlepower Distribution



Options

Antimicrobial: Optional Agion™ Antimicrobial protection using silver technology inhibits bacterial colonization on metal interior and exterior surfaces. Agion™ antimicrobial FDA recognized and EPA registered, meeting all applicable EPA standards.

Closed Cell Neoprene Gasket Standard



.125 Prismatic Acrylic Lens Standard

Morlite

a Genlyte company