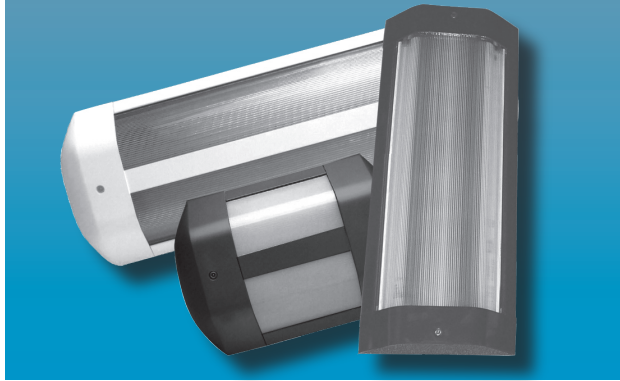


LPL-FP SERIES

LOW PROFILE SCONCE



FOOD PROCESSING

Specifier's Reference

Project Name	Type
Catalog No.	
Comments	

- **Listings/Certifications:** Wet location, ETL (US/Canada) listing

Specifications

- **Housing:** Extruded aluminum backplate with die cast aluminum end caps.
- **Lens:** .156" Positive interlocking, lighting grade, UV stabilized, extruded high impact polycarbonate lens with integral linear prisms. Specify clear or white opal.
- **Certifications:** UL/CUL, listed wet location. All photometric data certified by an independent testing facility. Meets Americans with Disabilities Act (ADA) requirements for wall mount ing applications. 175 psi direct spraydown. NSF listed.
- **Lamps:** 2-lamp configuration. Lamps supplied by others. See below for lamping options.
- **Ballasts:** Standard Class P, sound rated A electronic ballasts. Other ballast options available.
- **Mounting:** Wall or ceiling mounted.
- **Finish:** Multi-stage pretreatment process, standard finishes are baked white, black, grey or bronze polyester powder coating. Gloss 83%, reflectance 90%, salt spray 1,000 hrs. Custom colors available; consult factory. Optional AgION™ antimicrobial finish available.

Ordering Information

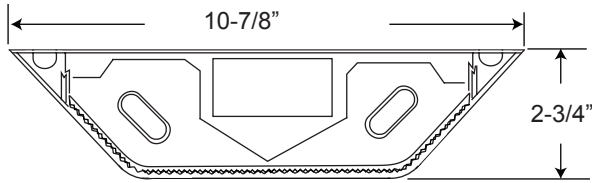
Example: LPL - FP - 2226 - C - EB - RND - F1 - TS - UNV

Series	Lens	Ballast Type	End Caps	Fasteners	Options	Voltage
<input type="text"/>	- <input type="text"/>	- <input type="text"/>	- <input type="text"/>	- <input type="text"/>	- <input type="text"/>	- <input type="text"/>
-2226 Nominal 12" Unit with 2-26W Quad PL	-C Clear Linear Prismatic -W White Opal Linear Prismatic Polycarbonate	-EB Electronic Ballast Standard -SB Specified Ballast	-RND Round Cast End Caps -SQR Square Cast End Caps	-F1 Allen Head, Center Pin Reject, standard -SF Specified fasteners	-EMG2 2-Lamp Emergency Power Pak 1100 Lumen initial output, 90 minute, 32° start temp. (40W Biax only) -TS Trim Strip -FS HLR/GLR Fuse & Holder set -CC Custom Color (provide color chip or RAL number & color) -AG AgION Antimicrobial Protection on Painted Surfaces	-UNV -347V

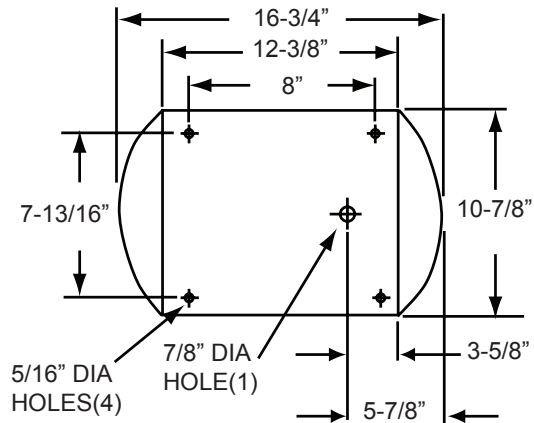
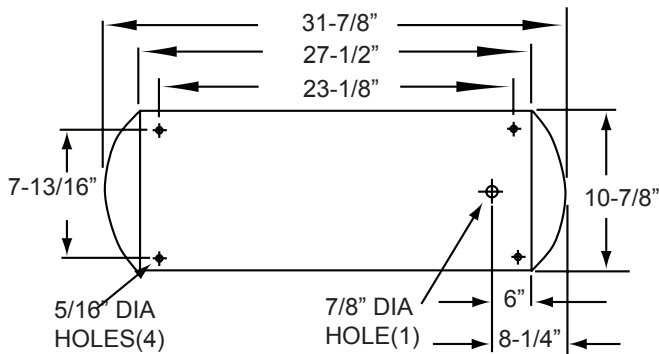
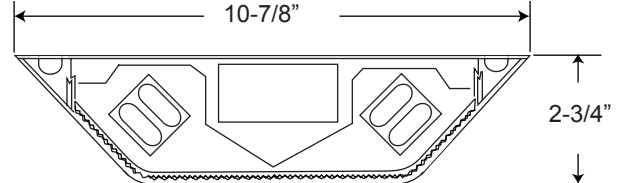
Note: Contact Factory For Additional Configurations.

Dimensions & Mounting

24" SCONCE
2-40W BIAx



12" SCONCE
2-26W PLQ



Photometry

Zonal Cavity Coefficient of Utilization

I.T.L. Test No. ITL48368
Product Catalog Number: LPL-FP-2240-C-EB-RND-F1-TS-UNV
Lamps: Two F40W Biax Twin Tube, rated 3150 lumens

Floor	20%										
Ceilings	80%			70%			50%				
Walls(%)	70	50	30	10	70	50	30	10	50	30	10
0	64	64	64	64	59	59	59	59	38	35	32
1	54	50	46	43	49	46	42	39	38	35	32
2	48	41	36	32	43	38	33	29	31	27	24
3	43	35	29	25	39	32	27	22	26	22	18
4	38	30	24	20	35	27	22	18	22	18	14
5	35	26	20	16	31	24	19	15	19	15	12
6	32	23	18	13	29	21	16	12	17	13	10
7	29	21	15	11	26	19	14	10	15	11	08
8	27	19	13	10	24	17	12	09	14	10	07
9	25	17	12	08	23	15	11	06	12	09	06
10	23	15	11	07	21	14	10	07	11	08	05

