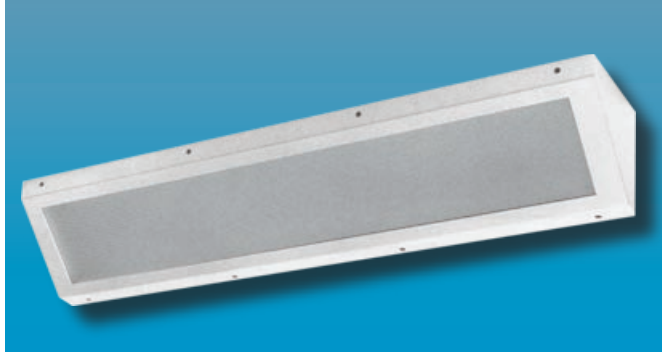


MAX-CDPH89 SERIES

14GA MAXIMUM SECURITY CORNER MOUNTED WITH DROP HINGE HOUSING



MAXIMUM SECURITY

Specifier's Reference

| | |
|--------------|------|
| Project Name | Type |
| Catalog No. | |
| Comments | |

- **Listings/Certifications:** ETL (US/Canada)

Specifications

- **Housing:** 14ga cold rolled steel. Clamshell housing, all exposed seams continuous welded. Optional stainless steel housing and back plate available.
- **Back Plate:** One-piece, die-formed cold rolled steel, formed to provide an irretrievable contraband trap. Available in brushed stainless steel as option.
- **Fasteners:** Fully recessed, captive, center pin reject Allen head standard. Optional fasteners shown below.
- **Hinge:** Completely concealed, 16-GA, 1/4" diameter knuckle, continuous piano hinge with welded pin ends. Hinge welded to one-piece housing and bolted to back plate.
- **Lens:** Standard .125" thick clear prismatic acrylic with clear polycarbonate overlay. Optional lensing shown below.
- **Lens Retention:** Vertically adjustable "Z" shaped retaining angles secured with through studs and die-cast locknuts. Gauge to match housing.
- **Lamps:** See below for lamping options. Lamps supplied by others.
- **Ballasts:** Standard Class P, sound rated A electronic ballasts. Other ballast options available.
- **Finish:** Standard baked white polyester powder coat paint finish. Optional AgION™ antimicrobial finish available.

Ordering Information

Example: **MAX - CDPH89- 4 - 3 - T5 - EB10IS - 4/C - SS - UNV**

| Series | Size | No. Lamps | Lamp Type | Ballast Type | Lens Type | Fasteners | Options | Voltage |
|-------------------|----------------------|--------------------------|------------------------|--------------------------------------|--|--|--|--------------|
| MAX-CDPH89 | - | - | - | - | - / - | - | - | - |
| | -4 4' Unit | -3 Three Lamps | -T8 4' 32W | -EB10IS Electronic Ballast | ENVIRONMENT SIDE | -F1 Allen Head - center pin reject, standard | -EMG1 1-Lamp Emergency Power Pak 500 Lumen initial output, 90 minute, 32" start temp. | -UNV |
| | -2 2' Unit | -2 Two Lamps | -T5 4' 28W | Instant Start <10% THD | -4 .375 Clear Polycarbonate | -SF Specified Fastener | -EMG2 2-Lamp Emergency Power Pak 1100 Lumen initial output, 90 minute, 32" start temp. | -347V |
| | | -1 One Lamp | -T5HO 4' 54W | -SB Specified Ballast | -8 .375 Clear Tempered Glass | | -EMG1 1-Lamp Emergency Power Pak 500 Lumen initial output, 90 minute, 32" start temp. | |
| | | | | | LAMP SIDE | | -EMG2 2-Lamp Emergency Power Pak 1100 Lumen initial output, 90 minute, 32" start temp. | |
| | | | | | -A .125 Prismatic Acrylic | | -SS Stainless Steel Housing, Brushed Stainless Steel Door | |
| | | | | | -C .140 DR Prismatic Acrylic | | -AG AgION™ Antimicrobial Protection in Powder Coat Paint | |
| | | | | | -G .156 Prismatic Tempered Glass | | -PL7 7W PL Nightlight | |
| | | | | | -UV .007 UV Absorbing Overlay | | -GLR GLR/HLR Fuse & Holder set | |
| | | | | | | | -WL Wet Location | |

Note: Contact Factory For Additional Configurations.

Morlite
TOUGH SITES TOUGH LITES

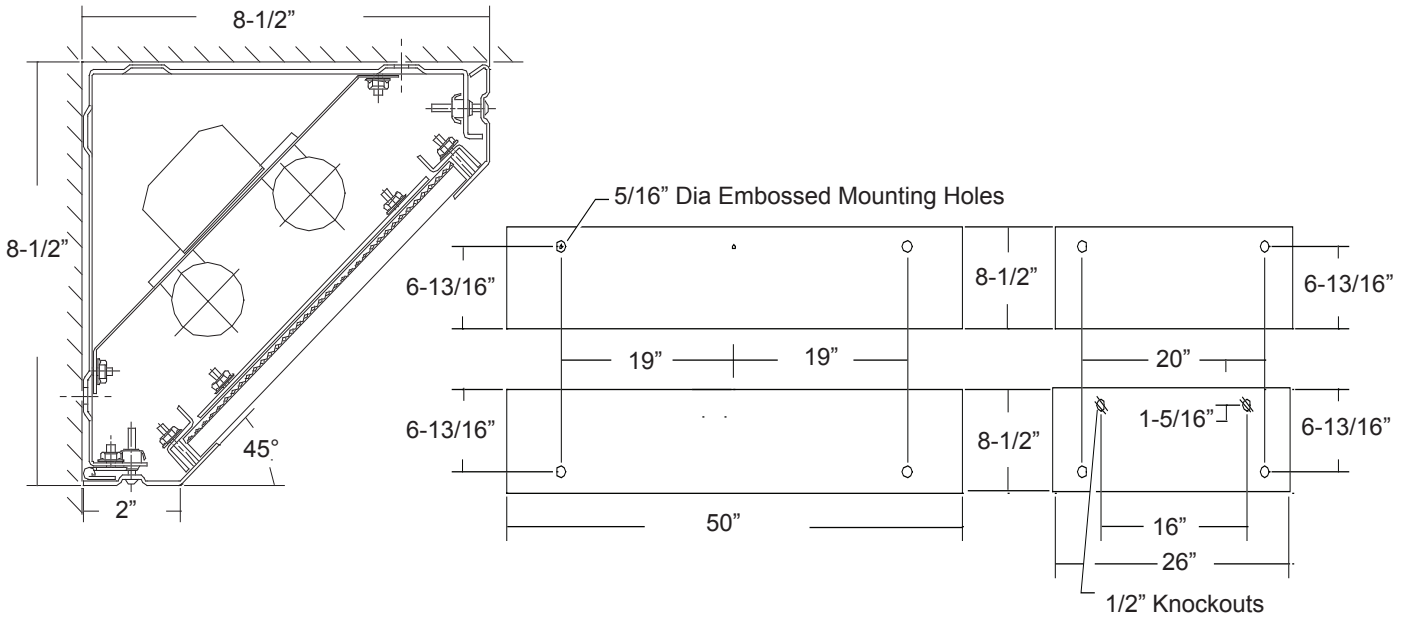
1805 Pittsburgh Ave, Erie, PA 16502 • 800-865-5954 • Fax 800-667-9959



MAX-CDPH89 SERIES
 MAXIMUM SECURITY CORNER
 MOUNTED DROP HINGE HOUSING



Dimensions & Mounting

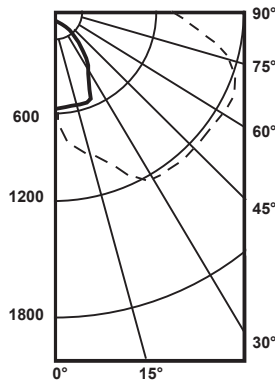


Photometry

Zonal Cavity Coefficient of Utilization
 I.T.L. Test No. ITL 37581,
 Product Catalog Number: MAX-CDPH-4-2
 Lamps: Two 32WT8, rated 3150 lumens.

| Floor | 80% | | | 20% | | | 50% | | | | |
|-------|-----|----|----|-----|----|----|-----|----|----|----|----|
| | 70 | 50 | 30 | 10 | 70 | 50 | 30 | 10 | 50 | 30 | 10 |
| 0 | 50 | 50 | 50 | 49 | 49 | 49 | 46 | 46 | 46 | 46 | 46 |
| 1 | 45 | 42 | 40 | 38 | 43 | 41 | 39 | 37 | 38 | 37 | 35 |
| 2 | 40 | 36 | 33 | 30 | 39 | 35 | 32 | 29 | 33 | 30 | 28 |
| 3 | 36 | 31 | 27 | 24 | 35 | 30 | 27 | 24 | 29 | 26 | 23 |
| 4 | 33 | 28 | 23 | 20 | 32 | 27 | 23 | 20 | 25 | 22 | 19 |
| 5 | 30 | 24 | 20 | 17 | 29 | 23 | 19 | 16 | 22 | 19 | 16 |
| 6 | 28 | 21 | 17 | 14 | 27 | 21 | 17 | 14 | 20 | 16 | 14 |
| 7 | 25 | 19 | 15 | 12 | 24 | 19 | 15 | 12 | 18 | 14 | 12 |
| 8 | 23 | 17 | 13 | 11 | 22 | 17 | 13 | 10 | 16 | 12 | 10 |
| 9 | 22 | 15 | 12 | 09 | 21 | 15 | 11 | 09 | 14 | 11 | 09 |
| 10 | 20 | 14 | 10 | 08 | 19 | 14 | 10 | 08 | 13 | 10 | 08 |

Candlepower Distribution



Average Luminance in Footlamberts

Average Brightness Vertical Norm Para Angles

| | | |
|-----|------|-----|
| 45° | 1798 | 639 |
| 55° | 1816 | 515 |
| 65° | 1837 | 498 |
| 75° | 1786 | 389 |
| 85° | 1571 | 142 |

| Lumin. Effi. | Spacing Cross | Maint. Factor |
|--------------|---------------|---------------|
| 43.1% | 2.5 | 85% |

Options

Antimicrobial: Agion™ Antimicrobial protection using silver technology inhibits bacterial colonization on metal interior and exterior surfaces. Agion™ antimicrobial FDA recognized and EPA registered, meeting all applicable EPA standards.



.125 Prismatic Acrylic Lens Standard

