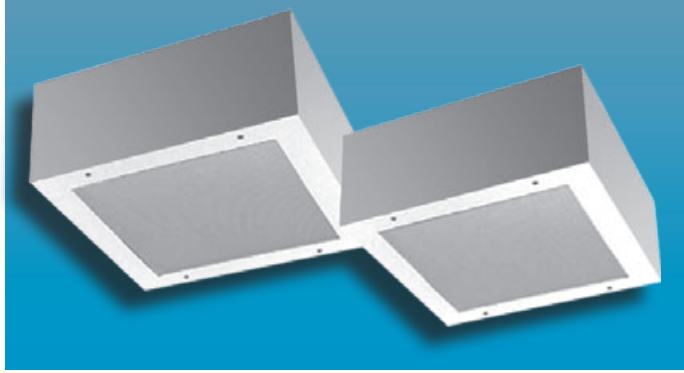


# MED-SDPH SQUARE SERIES

MEDIUM SECURITY SURFACE  
WITH DROP HINGE DOOR



# MEDIUM SECURITY

## Specifier's Reference

Project Name	Type
Catalog No.	
Comments	

- **Listings/Certifications:** ETL (US/Canada) listing

## Specifications

- **Housing:** One piece 16-gauge steel clamshell housing. All exposed seams continuous welded.
- **Door:** 16-gauge cold rolled steel drop hinged door with mitered corners and closed cell gasket.
- **Lens:** .250" thick clear polycarbonate standard. Optional lensing shown below.
- **Gasket:** 4lb density polyester foam standard.
- **Lamps:** See below for lamping options. Lamps supplied by others.
- **Lens Retention:** Vertically adjustable "Z" shaped retaining angles secured by through studs and die cast locknuts.
- **Ballasts:** Standard universal voltage 120V through 277V electronic 90% power factor <10% THD. Other ballast options available.
- **Finish:** Standard baked white polyester powder coat paint finish. Optional AglION™ antimicrobial finish available.
- **Mounting:** Embossed mounting holes in backplate to provide direct contact with mounting surface. See mounting details.

## Ordering Information

Example: **MED - FDPH - 125 - 2PL13 - 7/A - SS - UNV**

Series	Size	Lamp Type	Lens Type	Fasteners	Options	Voltage
<b>MED-SDPH</b>						
	<b>-125</b> 12" Square Unit	<b>FH125</b> One 150W A21 Incandescent	<b>ENVIRONMENT SIDE</b> -3 .250" Clear Polycarbonate (standard)	<b>-F1</b> Allen Head - center pin reject, standard	<b>-SS</b> Stainless Steel Housing, Brushed Stainless Steel Door	<b>-120V</b>
	<b>-188</b> 18" Square Unit	<b>-2PL9</b> Two PL9 <b>-2PL13</b> Two PL13 <b>-2PL26</b> Two 26W Quad <b>-1PLT32</b> One 32W Triple <b>-1PLT42</b> One 42W Triple	<b>-7</b> .250" Clear Tempered Glass <b>LAMP SIDE</b> <b>-A</b> .125 Prismatic Acrylic <b>-C</b> .140 DR Prismatic Acrylic <b>-G</b> .156 Prismatic Tempered Glass <b>-UV</b> .007 UV Absorbing Overlay	<b>-SF</b> Specified Fastener	<b>-AG</b> AglION™ Antimicrobial Protection in Powder Coat Paint <b>-GLR</b> GLR/HLR Fuse & Holder set <b>-EB</b> Electronic Ballast (FH125 only - requires quad lamp) <b>-AUX</b> Auxiliary Quartz Restrike hot or cold start (FH188 only)	<b>-277V</b> <b>-347V</b>
		<b>FH188</b> (Combine Wattage & type up to 250W, i.e. 175MH) <b>-**MH</b> <b>-**MV</b> <b>-**HPS</b>				

Note: Contact Factory For Additional Configurations.

**Morlite**  
TOUGH SITES ..... TOUGH LITES

1805 Pittsburgh Ave, Erie, PA 16502 • 800-865-5954 • Fax 800-667-9959



# MED-SDPH SQUARE SERIES

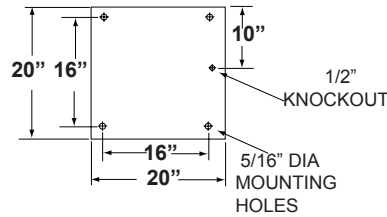
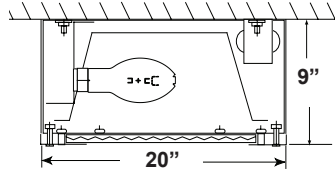
MEDIUM SECURITY SURFACE  
WITH DROP HINGE DOOR

# Morlite

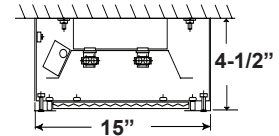
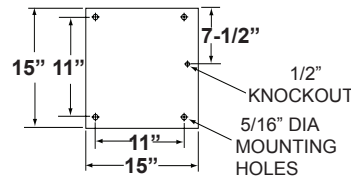
TOUGH SITES ..... TOUGH LITES

## Dimensions & Mounting

SDPH-188



SDPH-125



## Photometry

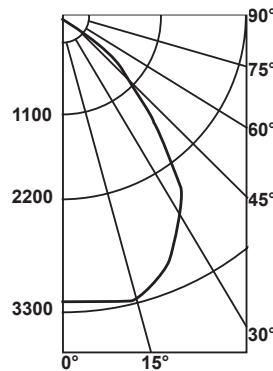
### Zonal Cavity Coefficient of Utilization

I.T.L. Test No. ITL 37563, Product Catalog Number:  
MED-SDPH-188-175MH-7/A-F1-SS-UNV

Lamps: Clear 175W metal halide, horizontal, rated 12,000 lumens

Floor Ceilings Walls(%)	80%			20% 70%			50%				
	70	50	30	10	70	50	30	10	50	30	10
0	65	65	65	65	63	63	63	63	61	61	61
1	61	59	57	56	60	58	56	55	56	54	53
2	57	54	51	49	56	53	50	48	51	49	47
3	53	49	46	43	52	48	45	43	47	44	42
4	50	45	41	38	49	44	41	38	43	40	38
5	47	41	37	34	45	40	37	34	39	36	34
6	43	37	33	30	42	37	33	30	36	33	30
7	40	34	30	27	39	34	30	27	33	29	27
8	38	31	27	24	37	31	27	24	30	27	24
9	35	28	24	22	34	28	24	22	28	24	22
10	33	26	22	20	32	26	22	20	25	22	19

### Candlepower Distribution



SDPH-188

### Average Luminance in Footlamberts

Vertical Angles	Average Brightness	
	Norm	Para
45°	4810	3838
55°	2798	2651
65°	1895	1557
75°	1213	1242
85°	497	585

Lumin. Effi.	Spacing Cross	Maint. Factor
41.5%	1.4	85%

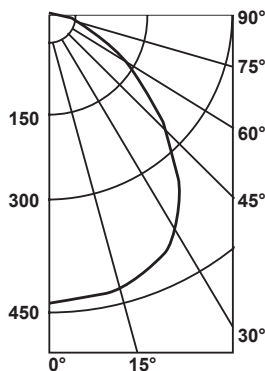
SDPH-125

### Average Luminance in Footlamberts

Vertical Angles	Average Brightness	
	Norm	Para
45°	1811	1517
55°	1173	1078
65°	831	844
75°	619	657
85°	256	323

Lumin. Effi.	Spacing Cross	Maint. Factor
41.5%	1.4	85%

### Candlepower Distribution



### Zonal Cavity Coefficient of Utilization

I.T.L. Test No. ITL 37555, Product Catalog Number:  
MED-SDPH-125-2PL13-7/A-SS-F1-UNV

Lamps: Two 13W PL, each rated 900 lumens

Floor Ceilings Walls(%)	80%			20% 70%			50%				
	70	50	30	10	70	50	30	10	50	30	10
0	60	60	60	60	59	59	59	59	56	56	56
1	57	55	53	52	55	54	52	51	52	50	49
2	53	50	47	45	52	49	46	44	47	45	43
3	49	45	42	39	48	44	41	39	43	40	38
4	46	41	38	35	45	41	37	35	39	37	34
5	43	38	34	31	42	37	34	31	36	33	31
6	40	34	30	28	39	34	30	28	33	30	27
7	37	31	27	25	36	31	27	24	30	27	24
8	34	28	25	22	34	28	25	22	27	24	22
9	32	26	22	20	31	26	22	20	25	22	20
10	30	24	20	18	29	24	20	18	23	20	18

## Options

**Antimicrobial:** Agion™ Antimicrobial protection using silver technology inhibits bacterial colonization on metal interior and exterior surfaces. Agion™ antimicrobial FDA recognized and EPA registered, meeting all applicable EPA standards.



.125 Prismatic Acrylic  
Lens Standard

# Morlite

a Genlyte company

1805 Pittsburgh Ave, Erie, PA 16502 • 800-865-5954 • Fax 800-667-9959