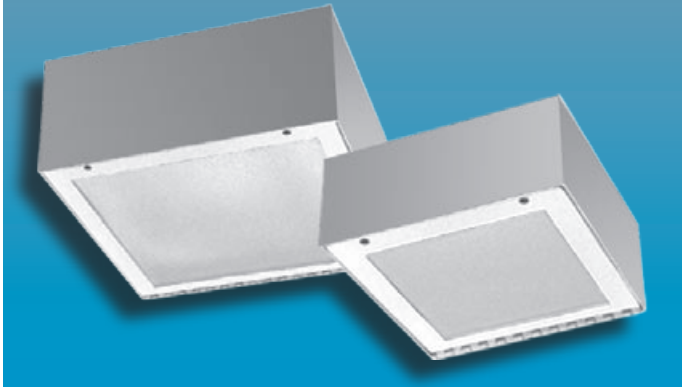


# MIN-SH SQUARE SERIES

MINIMUM SECURITY  
SURFACE MOUNTED TROFFER

# MINIMUM SECURITY



## Specifier's Reference

Project Name	Type
Catalog No.	
Comments	

- **Listings/Certifications:** ETL (US/Canada) listing

## Specifications

- **Housing:** 18 gauge, die-formed welded housing. Optional stainless steel housing available.
- **Door:** 18 gauge one-piece die-formed cold rolled steel. Available in brushed stainless steel as option.
- **Lens:** Standard .125" thick clear prismatic acrylic with clear polycarbonate overlay. Optional lensing shown below.
- **Lens Retention:** Vertically adjustable "Z" shaped retaining angles secured with through studs and die-cast locknuts.
- **Hinge:** 16 gauge 1/4" diameter knuckle, continuous piano hinge welded to housing and door.
- **Fasteners:** Fully recessed, captive, center pin reject Allen head standard.
- **Lamps:** See below for lamping options. Lamps supplied by others.
- **Ballasts:** Standard Class P, sound rated A electronic ballasts. Other ballast options available.
- **Finish:** Standard baked white polyester powder coat paint finish. Optional AgION™ antimicrobial finish available.
- **Mounting:** Standard 5/16" diameter mounting holes (4) for surface mounting. Hardware and support above plenum by others.

## Ordering Information

Example: **MIN - SH - 125 - 2PL13 - 8/A - SS - UNV**

Series	Size	Lamp Type	Lens Type	Fasteners	Options	Voltage
<b>MIN-SH</b>						
	<b>-125</b> 12" Square Unit	<b>SH125</b> (not available in HID) <b>-150</b> One 150W A21 Incandescent	<b>ENVIRONMENT SIDE</b> <b>-1</b> .125 Clear Polycarbonate (standard)	<b>-F1</b> Allen Head - center pin reject, standard	<b>-SS</b> Stainless Steel Housing, hinge and fasteners. Brushed Stainless Steel Door	<b>-120V</b>
	<b>-188</b> 18" Square Unit	<b>-2PL9</b> Two PL9 Quad <b>-2PL13</b> Two PL13 Quad <b>-2PL26</b> Two 26W Quad <b>-1PLT32</b> One 32W Triple <b>-1PLT42</b> One 42W Triple ..... <b>SH188</b> (Combine Wattage & type up to 250W, i.e. 175MH NOTE: HID requires glass lenses) <b>-**MH</b> <b>-**MV</b> <b>-**HPS</b>	<b>-2</b> .187 Clear Polycarbonate <b>-6</b> .187 Clear Tempered Glass <b>LAMP SIDE</b> <b>-A</b> .125 Prismatic Acrylic <b>-E</b> .125 Prismatic Polycarbonate <b>-H</b> .156 Prismatic Tempered Glass	<b>-SF</b> Specified Fastener	<b>-AG</b> AgION™ Antimicrobial Protection in Powder Coat Paint <b>-GLR</b> GLR/HLR Fuse & Holder set <b>-AUX</b> Auxiliary Quartz Restrike hot or cold start (SH188 only)	<b>-277V</b> <b>-347V</b>

Note: Contact Factory For Additional Configurations.

**Morlite**  
TOUGH SITES ..... TOUGH LITES

1805 Pittsburgh Ave, Erie, PA 16502 • 800-865-5954 • Fax 800-667-9959



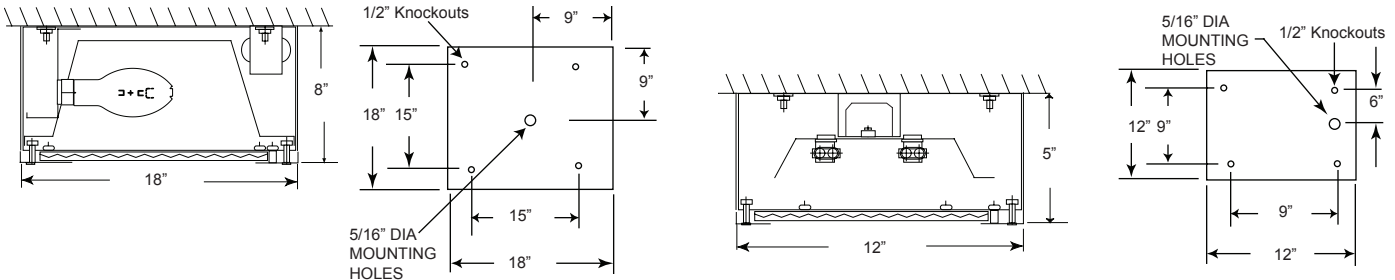
# MIN-SH SQUARE SERIES

MINIMUM SECURITY  
SURFACE MOUNTED

# Morlite

TOUGH SITES .... TOUGH LITES

## Dimensions & Mounting

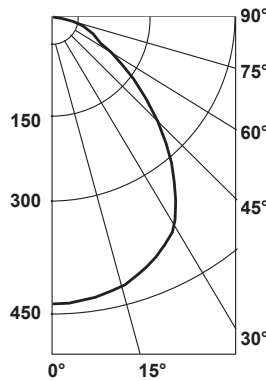


## Photometry

**Zonal Cavity Coefficient of Utilization**  
I.T.L. Test No. ITL 37553, Product Catalog Number:  
MIN-SH125-F-2PL13-5/A-F1-SS-120V  
Lamps: Two 13W PL Twin Tube, each rated 900

Floor Ceilings Walls(%)	80%				20% 70%				50%					
	70	50	30	10	70	50	30	10	50	30	10	50	30	10
0	60	60	60	60	59	59	59	59	56	56	56	56	56	56
1	57	55	53	52	55	54	52	51	52	50	49	49	49	49
2	53	50	47	45	52	49	46	44	47	45	43	43	43	43
3	49	45	42	39	48	44	41	39	43	40	38	38	38	38
4	46	41	38	35	45	41	37	35	39	37	34	34	34	34
5	43	38	34	31	42	37	34	31	36	33	31	31	31	31
6	40	34	30	28	39	34	30	28	33	30	27	27	27	27
7	37	31	27	25	36	31	27	24	30	27	24	24	24	24
8	34	28	25	22	34	28	25	22	27	24	22	22	22	22
9	32	26	22	20	31	26	22	20	25	22	20	20	20	20
10	30	24	20	18	29	24	20	18	23	20	18	18	18	18

### Candlepower Distribution



### Average Luminance in Footlamberts

Vertical Angles	Average Brightness	
	Norm	Para
45°	1811	1517
55°	1173	1078
65°	831	844
75°	619	657
85°	256	323

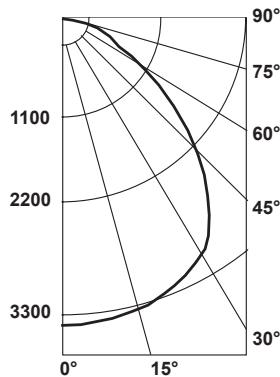
  

Lumin. Effi.	Spacing Cross	Maint. Factor
50.7%	1.3	85%

**Zonal Cavity Coefficient of Utilization**  
I.T.L. Test No. ITL 37560, Product Catalog Number:  
MIN-SH-188-175MH-5/G  
Lamps: Clear 175W metal halide, horizontal, rated 12000

Floor Ceilings Walls(%)	80%				20% 70%				50%					
	70	50	30	10	70	50	30	10	50	30	10	50	30	10
0	70	70	70	70	68	68	68	68	65	65	65	65	65	65
1	66	63	62	60	64	62	60	59	60	58	57	57	57	57
2	61	58	55	52	60	57	54	52	55	52	50	50	50	50
3	57	52	49	46	56	51	48	45	50	47	45	45	45	45
4	53	48	44	41	52	47	43	40	46	42	40	40	40	40
5	50	43	39	36	49	43	39	36	42	38	35	35	35	35
6	46	40	35	32	45	39	35	32	38	34	32	32	32	32
7	43	36	31	28	42	35	31	28	35	31	28	28	28	28
8	40	33	28	25	39	32	28	25	32	28	25	25	25	25
9	37	30	26	23	36	30	25	23	29	25	22	22	22	22
10	34	27	23	20	34	27	23	20	27	23	20	20	20	20

### Candlepower Distribution



### Average Luminance in Footlamberts

Vertical Angles	Average Brightness	
	Norm	Para
45°	5323	4066
55°	3133	2833
65°	2152	1745
75°	1359	1331
85°	556	612

Lumin. Effi.	Spacing Cross	Maint. Factor
58.7%	1.4	85%

## Options

**Antimicrobial:** Agion™ Antimicrobial protection using silver technology inhibits bacterial colonization on metal interior and exterior surfaces. Agion™ antimicrobial FDA recognized and EPA registered, meeting all applicable EPA standards.



.125 Prismatic Acrylic Lens Standard

# Morlite

a Genlyte company