

CSWP SERIES

High Abuse/Security Cast Wall Plates

INSTITUTIONAL/BEHAVIORAL



Specifier's Reference	
Project Name	Type
Catalog No.	
Comments	

- **Listings/Certifications:** ADA Compliant

Specifications

- **Cover:** Cover plate is made of heavy-walled (.125"), corrosion-resistant die cast zinc with 9" radius front for maximum protection of device(s). Devices, when installed, are recessed below surface of cover plate.
- **Back Plate:** 12GA galvanized steel with 1/4-20 threaded inserts installed.
- **Devices:** Supplied by others.
- **Fasteners:** Stainless steel center pin reject allen-head standard. See fasteners list for alternatives.
- **Finish:** Multi-stage pretreatment process, standard finish is a baked white polyester powder coating. Consult factory for custom colors.
- **Certification:** Patent pending

Ordering Information

Example: **CSWP - 2 - SW - GFI - F1 - CP**

Series	Qty Gangs	Device 1	Device 2	Fasteners	Options
CSWP	<input type="text"/>	<input type="text"/>	<input type="text"/>	<input type="text"/>	<input type="text"/>
	-1 -2	-SW Toggle Switch -TO Cable or Telephone Device -GFI Ground Fault Receptacle -DR Duplex Receptacle	(2-Gang Plate Only) -SW Toggle Switch -TO Cable or Telephone Device -GFI Ground Fault Receptacle -DR Duplex Receptacle	-F1 Allen Head, Center Pin Reject, standard -F2 Torx Head, Center Pin Reject	-CP Concrete Pour -SC Special Color

Note: Contact Factory For Additional Configurations.

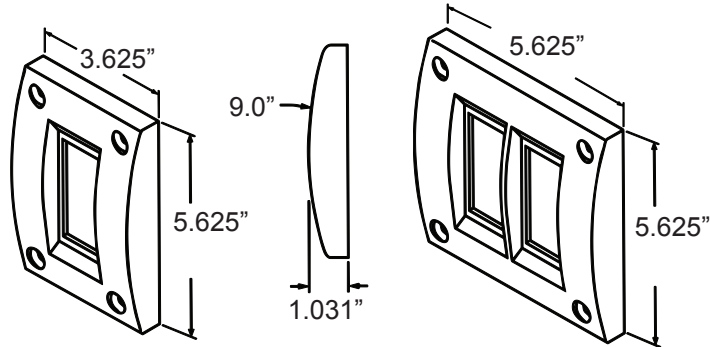
CSWP SERIES

High Abuse/Security Cast Wall Plates

Morlite

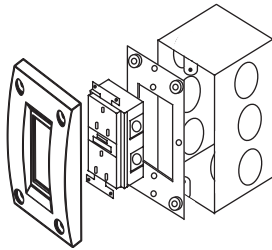
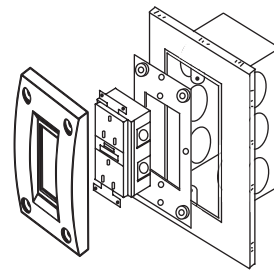
TOUGH SITES TOUGH LITES

Dimensions & Mounting



Concrete Block or Steel Wall Construction

1. Align back plate over J-box, matching device holes.
2. Secure back plate to wall with appropriate self-tapping screws, self-drilling screws, or anchors and lags (provided by others).
3. Install selected device shims or spacers as required (provided by others).
4. Install cover plate with selected tamper-proof screws using special tool provided.



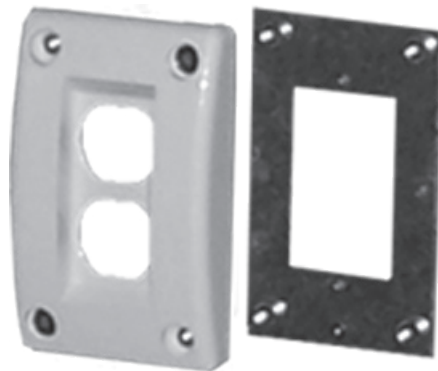
Poured Concrete Wall Construction

1. Align back plate over J-box, matching device holes.
2. Attach back plate to concrete forms.
3. Install protective plugs into threaded inserts on back plate.
4. After forms have been stripped, remove protective plugs and discard.
5. Install selected device shims or spacers as required (provided by others).
6. Install cover plate with selected tamper-proof screws using special tool provided.

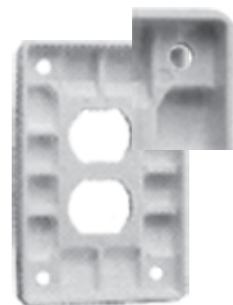
Features & Benefits



Fully recessed, stainless steel, tamper-proof screws deter unauthorized removal.



Cover plate and back plate shown. Contoured face is architecturally appealing and provides superior strength against physical damage.



Internal ribs provide strength at key stress points for added impact resistance.

Morlite

a Genlyte company